

Grand Drive Raynes Park, SW20 9EA

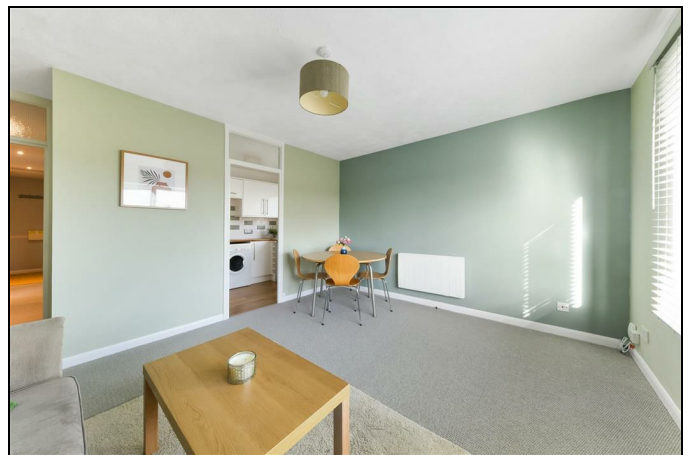
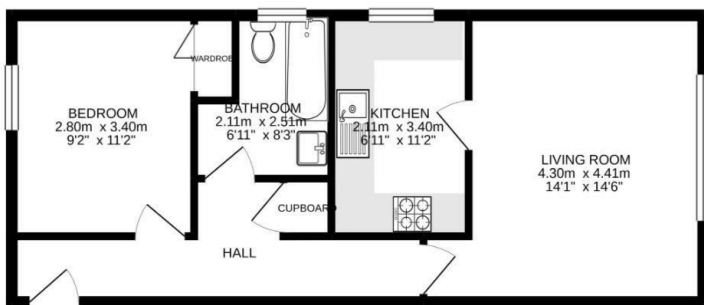
£1,500 PCM



RECENTLY REFURBISHED, BEAUTIFULLY PRESENTED one bedroom, furnished top floor purpose built flat with off street parking. Located approximately 10 minutes walk from Raynes Park station with a range of local shops and restaurants. The property benefits from spacious rooms, a modern bathrooms and double bedroom with fitted wardrobe.

EPC band C. Council tax band C.

Ground floor
46.9 sq.m. (504 sq.ft.) approx.



- Beautiful condition throughout
- Off street parking
- Fitted wardrobe
- Double glazing
- Top floor flat
- First months rent in advance
- Five weeks security deposit
- Holding deposit = one weeks rent
- EPC band C
- Council tax band C

Energy Efficiency Rating		
	Current	Potential
Very energy efficient - lower running costs		
(92 plus) A		
(81-91) B		
(69-80) C	71	75
(55-68) D		
(39-54) E		
(21-38) F		
(1-20) G		
Not energy efficient - higher running costs		
EU Directive 2002/91/EC		
England & Wales		